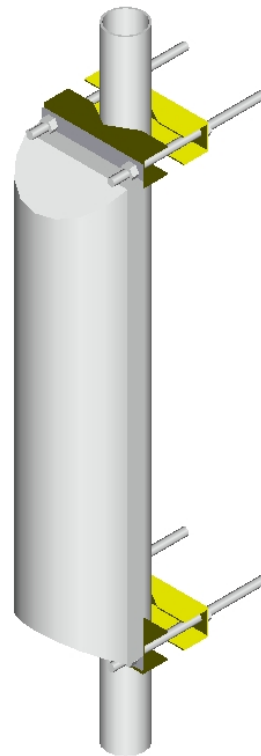
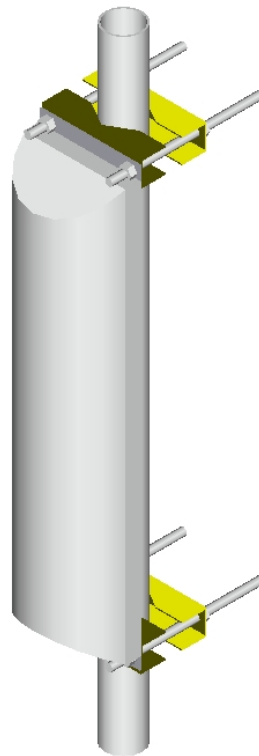


## AV306 BASESTATION ANTENNA SERIES



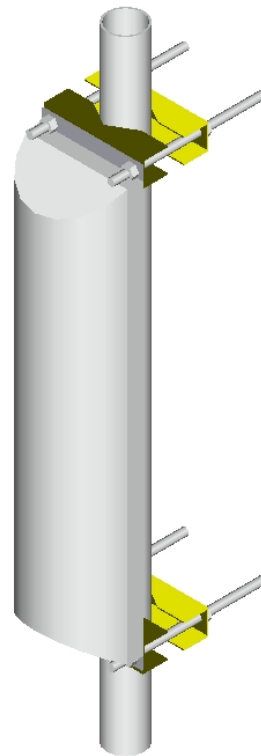
Type	AV3060	AV3062	AV3064	AV3068
Frequency	1355...1492 MHz	1355...1492 MHz	1355...1492 MHz	1355...1492 MHz
Bandwidth	137 MHz	137 MHz	137 MHz	137 MHz
Impedance	50 Ω DC grounded	50 Ω DC grounded	50 Ω DC grounded	50 Ω DC grounded
VSWR	1,5	1,3	1,3	1,3
Polarisation	Vertical	Vertical	Vertical	Vertical
Gain	9 dBi	13 dBi	16 dBi	18,5 dBi
E-plane 3 dB beamwidth	65°	28°	14°	7°
H-plane 3 dB beamwidth	65°	62°	62°	62°
Electrical downtilt	None	None	None	None
Front to back ratio	20 dB	20 dB	20 dB	20 dB
Max. Continuous power	0,5 kW	0,5 kW	0,5 kW	0,5 kW
RF-connector	7/16 female	7/16 female	7/16 female	7/16 female
Operational windspeed	40 m/s (default)	40 m/s (default)	40 m/s (default)	40 m/s (default)
Survival windspeed	55 m/s (default)	55 m/s (default)	55 m/s (default)	55 m/s (default)
Wind area	0,05 m <sup>2</sup>	0,1 m <sup>2</sup>	0,2 m <sup>2</sup>	0,4 m <sup>2</sup>
Dimensions (HxWxD)	380x160x100 mm	480x160x100 mm	740x160x100 mm	1380x160x100 mm
Weight	0,7 kg	1,7 kg	3,5 kg	6 kg
Mounting diameter	Ø 30...115 mm pipe	Ø 30...115 mm pipe	Ø 30...115 mm pipe	Ø 30...115 mm pipe
Materials	Aluminium Glassfiber radome Glass reinforced PE	Aluminium Glassfiber radome Glass reinforced PE	Aluminium Glassfiber radome Glass reinforced PE	Aluminium Glassfiber radome Glass reinforced PE
Options	-	-	-	-

## AV309 BASESTATION ANTENNA SERIES



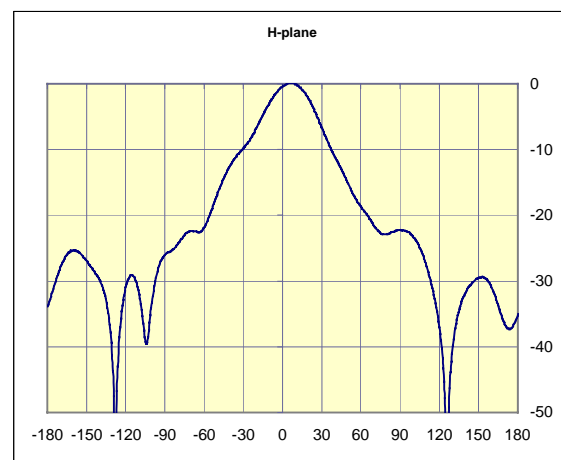
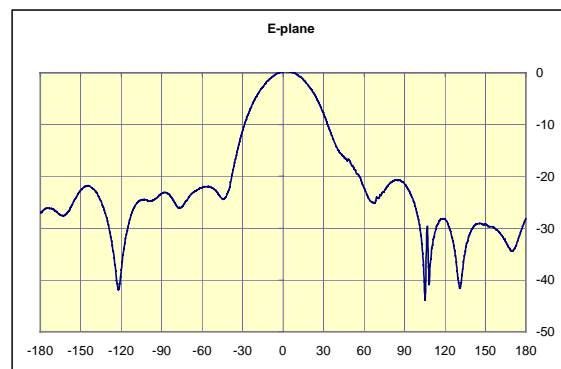
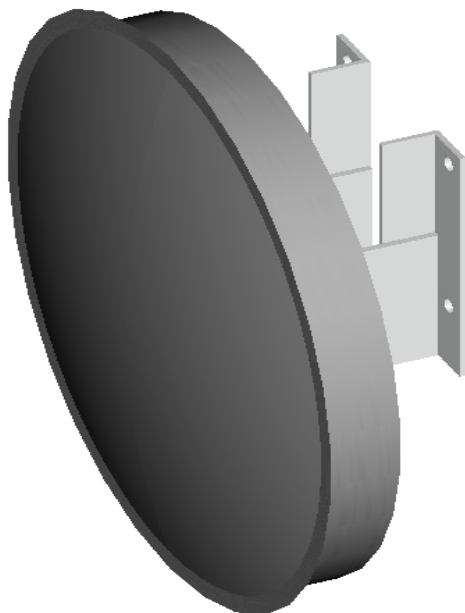
Type	AV3090	AV3092	AV3094	AV3098
Frequency	1355...1492 MHz	1355...1492 MHz	1355...1492 MHz	1355...1492 MHz
Bandwidth	137 MHz	137 MHz	137 MHz	137 MHz
Impedance	50 Ω DC grounded	50 Ω DC grounded	50 Ω DC grounded	50 Ω DC grounded
VSWR	1,3	1,3	1,3	1,3
Polarisation	Vertical	Vertical	Vertical	Vertical
Gain	8,5 dBi	11,5 dBi	14,5 dBi	17 dBi
E-plane 3 dB beamwidth	56°	28°	14°	7°
H-plane 3 dB beamwidth	92°	92°	92°	92°
Electrical downtilt	None	None	None	None
Front to back ratio	20 dB	20 dB	20 dB	20 dB
Max. Continuous power	0,5 kW	0,5 kW	0,5 kW	0,5 kW
RF-connector	7/16 female	7/16 female	7/16 female	7/16 female
Operational windspeed	40 m/s (default)	40 m/s (default)	40 m/s (default)	40 m/s (default)
Survival windspeed	55 m/s (default)	55 m/s (default)	55 m/s (default)	55 m/s (default)
Wind area	0,05 m <sup>2</sup>	0,1 m <sup>2</sup>	0,2 m <sup>2</sup>	0,4 m <sup>2</sup>
Dimensions (HxWxD)	380x160x100 mm	480x160x100 mm	740x160x100 mm	1380x160x100 mm
Weight	0,7 kg	1,7 kg	3,5 kg	6 kg
Mounting diameter	Ø 30...115 mm pipe	Ø 30...115 mm pipe	Ø 30...115 mm pipe	Ø 30...115 mm pipe
Materials	Aluminium Glassfiber radome Glass reinforced PE	Aluminium Glassfiber radome Glass reinforced PE	Aluminium Glassfiber radome Glass reinforced PE	Aluminium Glassfiber radome Glass reinforced PE
Options	-	-	-	-

## AV312 BASESTATION ANTENNA SERIES



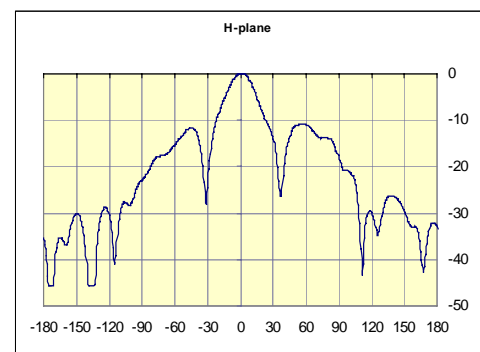
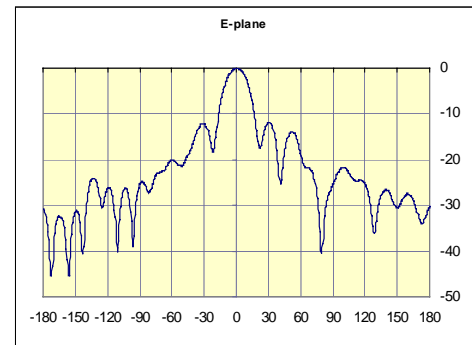
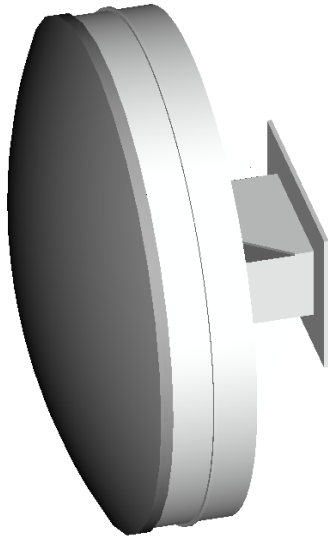
Type	AV3120	AV3122	AV3124	AV3128
Frequency	1355...1492 MHz	1355...1492 MHz	1355...1492 MHz	1355...1492 MHz
Bandwidth	137 MHz	137 MHz	137 MHz	137 MHz
Impedance	50 Ω DC grounded	50 Ω DC grounded	50 Ω DC grounded	50 Ω DC grounded
VSWR	1,3	1,3	1,3	1,3
Polarisation	Vertical	Vertical	Vertical	Vertical
Gain	7 dBi	10 dBi	13 dBi	15,5 dBi
E-plane 3 dB beamwidth	56°	28°	14°	7°
H-plane 3 dB beamwidth	115°	115°	115°	115°
Electrical downtilt	None	None	None	None
Front to back ratio	20 dB	20 dB	20 dB	20 dB
Max. Continuous power	0,5 kW	0,5 kW	0,5 kW	0,5 kW
RF-connector	7/16 female	7/16 female	7/16 female	7/16 female
Operational windspeed	40 m/s (default)	40 m/s (default)	40 m/s (default)	40 m/s (default)
Survival windspeed	55 m/s (default)	55 m/s (default)	55 m/s (default)	55 m/s (default)
Wind area	0,05 m <sup>2</sup>	0,1 m <sup>2</sup>	0,2 m <sup>2</sup>	0,4 m <sup>2</sup>
Dimensions (HxWxD)	380x160x100 mm	480x160x100 mm	740x160x100 mm	1380x160x100 mm
Weight	0,7 kg	1,7 kg	3,5 kg	6 kg
Mounting diameter	Ø 30...115 mm pipe	Ø 30...115 mm pipe	Ø 30...115 mm pipe	Ø 30...115 mm pipe
Materials	Aluminium Glassfiber radome Glass reinforced PE	Aluminium Glassfiber radome Glass reinforced PE	Aluminium Glassfiber radome Glass reinforced PE	Aluminium Glassfiber radome Glass reinforced PE
Options	-	-	-	-

## SHORT BACKFIRE ANTENNA AV4601



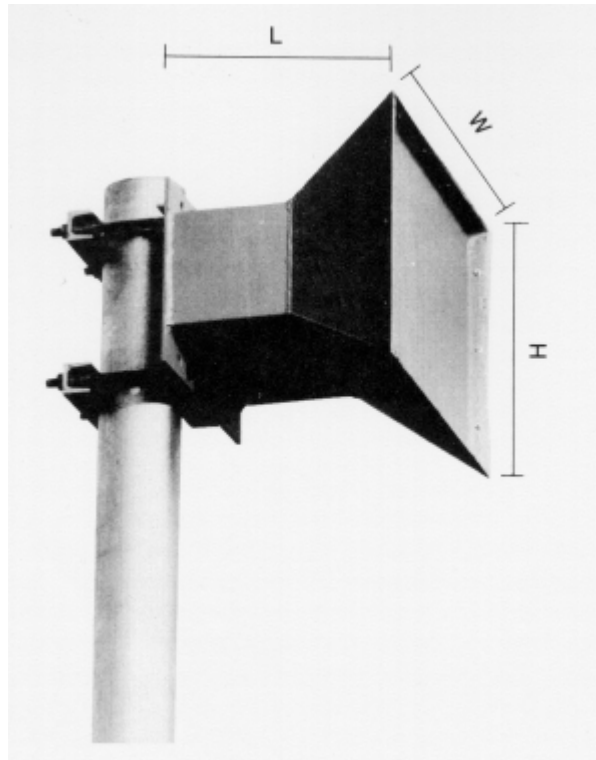
Type	AV4601
Frequency	1,375...1444 GHz
Bandwidth	69 MHz
Impedance	50 Ω
VSWR	1,5 max
Polarisation	Horizontal or Vertical
Gain	15 dBi
E-plane 3 dB beamwidth	36°
H-plane 3 dB beamwidth	32°
Electrical downtilt	None
Front to back ratio	30 dB
Max. Continuous power	0,5 kW
RF-connector	N or 7/16 female
Operational windspeed	40 m/s (default)
Survival windspeed	55 m/s (default)
Wind area	0,2 m <sup>2</sup>
Dimensions (H x W x D) (Ø x H)	470 x 190 mm
Weight	5 kg
Mounting diameter	Ø 30...115 mm pipe
Materials	Aluminium Glassfiber radome Glass reinforced PE
Options	-

## SHORT BACKFIRE ANTENNA AV6501



Type	AV6501
Frequency	1,375...1,444 GHz
Bandwidth	69 MHz
Impedance	50 $\Omega$
VSWR	1,5 max
Polarisation	Horizontal or Vertical
Gain	18 dBi
E-plane 3 dB beamwidth	20°
H-plane 3 dB beamwidth	25°
Electrical downtilt	None
Front to back ratio	30 dB
Max. Continuous power	0,5 kW
RF-connector	N or 7/16 female
Operational windspeed	40 m/s (default)
Survival windspeed	55 m/s (default)
Wind area	0,4 m <sup>2</sup>
Dimensions (H x W x D) (Ø x H)	680 x 330 mm
Weight	11 kg
Mounting diameter	Ø 30...115 mm pipe
Materials	Aluminium Glassfiber radome Glass reinforced PE
Options	-

## HORN ANTENNAS AH8/1,4 AND AH10/1,4 AND AH15/1,4



Type	AH8/1,4	AH10/1,4	AH15/1,4
Frequency	1,35...1,55 GHz	1,35...1,55 GHz	1,35...1,55 GHz
Bandwidth	0,2 GHz	0,2 GHz	0,2 GHz
Impedance	50 $\Omega$	50 $\Omega$	50 $\Omega$
VSWR	1,5 max, 1,3 typical	1,5 max, 1,3 typical	1,5 max, 1,3 typical
Polarisation	Horizontal or vertical	Horizontal or vertical	Horizontal or vertical
Gain	8 dBi	10 dBi	15 dBi
E-plane 3 dB beamwidth	75°	60°	30°
H-plane 3 dB beamwidth	75°	60°	30°
Electrical downtilt	None	None	None
Front to back ratio	20 dB	20 dB	20 dB
Max. Continuous power	0,5 kW	0,5 kW	0,5 kW
RF-connector	N or 7/16 female	N or 7/16 female	N or 7/16 female
Operational windspeed	40 m/s (default)	40 m/s (default)	40 m/s (default)
Survival windspeed	55 m/s (default)	55 m/s (default)	55 m/s (default)
Wind area	0,1 m <sup>2</sup>	0,125 m <sup>2</sup>	0,25 m <sup>2</sup>
Dimensions (HxWxD)	140x140x200 mm	250x250x300 mm	500x500x450 mm
Weight	1,5 kg	2,5 kg	4 kg
Mounting diameter	Ø 30...115 mm pipe	Ø 30...115 mm pipe	Ø 30...115 mm pipe
Materials	Aluminium Glassfiber radome Glass reinforced PE	Aluminium Glassfiber radome Glass reinforced PE	Aluminium Glassfiber radome Glass reinforced PE
Options	-	-	-