

## AV5020 DIRECTIONAL UMTS ANTENNA



Type	AV5020
Frequency	1920 MHz...2170 MHz *
Bandwidth	250 MHz
Impedance	50 $\Omega$ DC grounded
VSWR	1,5 typical
Polarisation	Horizontal or vertical
Gain	4-6 dBi
E-plane 3 dB beamwidth	80°
H-plane 3 dB beamwidth	120°
Front to back ratio	10-15 dB
Max. Continuous power	0,5 kW
RF-connector	N-female
Wind area	0,006 m <sup>2</sup>
Dimensions (HxWxD)	100x40x60
Weight	0,2 kg
Mounting diameter	Wall mount included
Materials	Aluminium Glassfiber radome Glass reinforced PE
Options	Colour

\* 1920...1980 MHz, 2110...2170 MHz

## AV506 UMTS BASESTATION ANTENNA SERIES

### - Preliminary datasheet -



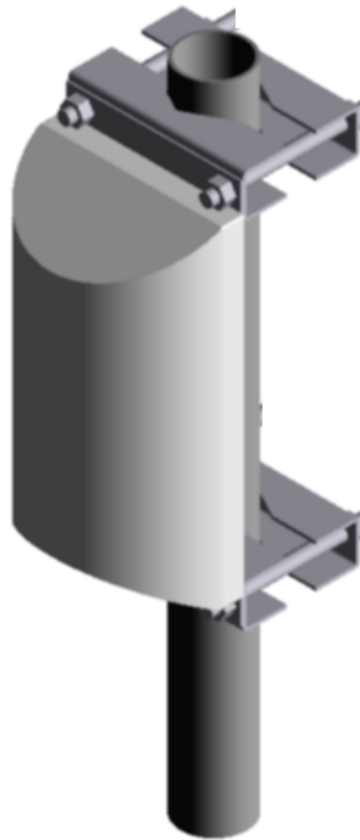
Type	AV5060	AV5062	AV5064	AV5068
Frequency	1920...2170 MHz * 1710...2170 MHz**	1920...2170 MHz * 1710...2170 MHz**	1920...2170 MHz * 1710...2170 MHz**	1920...2170 MHz * 1710...2170 MHz**
Bandwidth	250 MHz * 460 MHz **	250 MHz 460 MHz	250 MHz 460 MHz	250 MHz 460 MHz
Impedance	50 Ω DC grounded	50 Ω DC grounded	50 Ω DC grounded	50 Ω DC grounded
VSWR	1,5 max	1,5 max	1,5 max	1,5 max
Polarisation	Vertical	Vertical	Vertical	Vertical
Gain	9 dBi	12 dBi	15 dBi	18 dBi
E-plane 3 dB beamwidth	60°	30°	15°	7°
H-plane 3 dB beamwidth	60°	60°	60°	60°
Electrical downtilt	None	None	None	None
Front to back ratio	25 dB	25 dB	25 dB	25 dB
Max. Continuous power	0,5 kW	0,5 kW	0,5 kW	0,5 kW
RF-connector	7/16 female	7/16 female	7/16 female	7/16 female
Operational windspeed	40 m/s (default)	40 m/s (default)	40 m/s (default)	40 m/s (default)
Survival windspeed	55 m/s (default)	55 m/s (default)	55 m/s (default)	55 m/s (default)
Wind area	0,07 m <sup>2</sup>	0,1 m <sup>2</sup>	0,17 m <sup>2</sup>	0,24 m <sup>2</sup>
Dimensions (HxWxD)	300x160x50 mm	400x160x50 mm	700x160x50 mm	1000x160x50 mm
Weight	1,2 kg	2 kg	3 kg	5 kg
Mounting diameter	Ø 30...115 mm pipe	Ø 30...115 mm pipe	Ø 30...115 mm pipe	Ø 30...115 mm pipe
Materials	Aluminium Glassfiber radome Glass reinforced PE	Aluminium Glassfiber radome Glass reinforced PE	Aluminium Glassfiber radome Glass reinforced PE	Aluminium Glassfiber radome Glass reinforced PE
Options	-	-	-	-

\* 1920...1980 MHz and 2110...2170 MHz

\*\* 1920...1980 MHz, 2110...2170 MHz and 1710...1880 MHz

## AV512 UMTS BASESTATION ANTENNA SERIES

### -Preliminary datasheet



Type	AV5120	AV5122	AV5124	AV5128
Frequency	1920...2170 MHz * 1710...2170 MHz**	1920...2170 MHz * 1710...2170 MHz**	1920...2170 MHz * 1710...2170 MHz**	1920...2170 MHz * 1710...2170 MHz**
Bandwidth	250 MHz * 460 MHz **	250 MHz * 460 MHz **	250 MHz * 460 MHz **	250 MHz * 460 MHz **
Impedance	50 Ω DC grounded	50 Ω DC grounded	50 Ω DC grounded	50 Ω DC grounded
VSWR	1,3 max	1,3 max	1,3 max	1,3 max
Polarisation	Vertical	Vertical	Vertical	Vertical
Gain	7 dBi	10 dBi	13 dBi	15,5 dBi
E-plane 3 dB beamwidth	56°	28°	14°	7°
H-plane 3 dB beamwidth	115°	115°	115°	115°
Electrical downtilt	None	None	None	None
Front to back ratio	20 dB	20 dB	20 dB	20 dB
Max. Continuous power	0,5 kW	0,5 kW	0,5 kW	0,5 kW
RF-connector	7/16 or N female	7/16 or N female	7/16 or N female	7/16 or N female
Operational windspeed	40 m/s (default)	40 m/s (default)	40 m/s (default)	40 m/s (default)
Survival windspeed	55 m/s (default)	55 m/s (default)	55 m/s (default)	55 m/s (default)
Wind area	0,05 m <sup>2</sup>	0,1 m <sup>2</sup>	0,2 m <sup>2</sup>	0,4 m <sup>2</sup>
Dimensions (HxWxD)	155x140x100 mm	310x140x100 mm	620x140x100 mm	1230x140x100 mm
Weight	0,5 kg	0,85 kg	1,7 kg	3,4 kg
Mounting diameter	Ø 30...115 mm pipe	Ø 30...115 mm pipe	Ø 30...115 mm pipe	Ø 30...115 mm pipe
Materials	Aluminium Glassfiber radome Glass reinforced PE	Aluminium Glassfiber radome Glass reinforced PE	Aluminium Glassfiber radome Glass reinforced PE	Aluminium Glassfiber radome Glass reinforced PE
Options	-	-	-	-

\* 1920...1980 MHz and 2110...2170 MHz

\*\* 1920...1980 MHz, 2110...2170 MHz and 1710...1880 MHz

## AV543 OMNIDIRECTIONAL UMTS BASESTATION ANTENNA SERIES



Type	AV5430	AV5432	AV5438
Frequency	1710...2170 MHz *	1710...2170 MHz *	1710...2170 MHz *
Bandwidth	460 MHz*	460 MHz*	460 MHz*
Impedance	50 Ω DC grounded	50 Ω DC grounded	50 Ω DC grounded
VSWR	1,5	1,5	1,5
Polarisation	Vertical	Vertical	Vertical
Gain	2 dBi	5 dBi	8 dBi
E-plane 3 dB beamwidth	60°	30°	15°
H-plane 3 dB beamwidth	360°	360°	360°
Electrical downtilt	None	None	None
Front to back ratio	-	-	-
Max. Continuous power	200 W or 500 W	200 W or 500 W	200 W or 500 W
RF-connector	N or 7/16 female	N or 7/16 female	N or 7/16 female
Operational windspeed	40 m/s (default)	40 m/s (default)	40 m/s (default)
Survival windspeed	55 m/s (default)	55 m/s (default)	55 m/s (default)
Wind area	0,04 m <sup>2</sup>	0,05 m <sup>2</sup>	0,08 m <sup>2</sup>
Dimensions (ØxH)	86x350 mm	86x500 mm	86x820 mm
Weight	1,5 kg	3,3 kg	5 kg
Mounting diameter	Ø 30...115 mm pipe	Ø 30...115 mm pipe	Ø 30...115 mm pipe
Materials	Aluminium Glassfiber radome Glass reinforced PE	Aluminium Glassfiber radome Glass reinforced PE	Aluminium Glassfiber radome Glass reinforced PE
Options	-	-	-

1920...1980 MHz AND 2110...2170 MHz

OR

1710...1880 MHz, 1920...1980 MHz AND 2110...2170 MHz



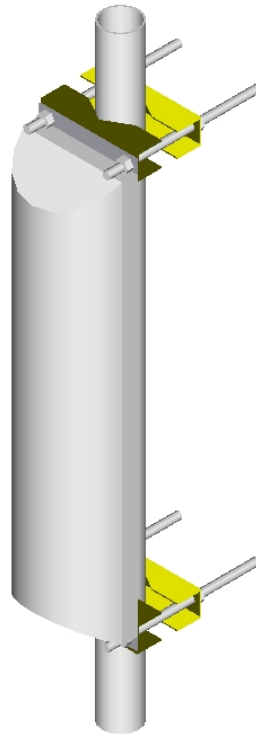
Box 22  
04401 Järvenpää  
Finland

Tel. +358 9 2790 120  
Fax +358 9 2910 210

<http://www.aerial.fi>  
[aerial@aerial.fi](mailto:aerial@aerial.fi)

## AV5X6 UMTS BASESTATION ANTENNA SERIES

### - Preliminary datasheet -



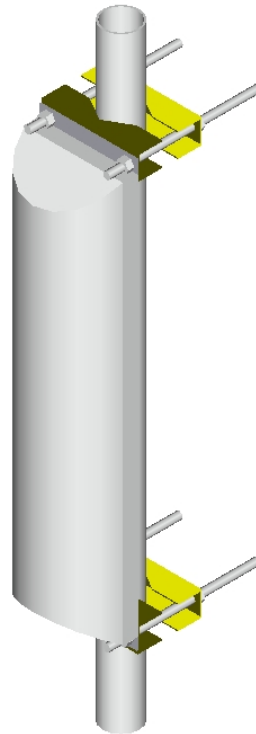
Type	AV5X60	AV5X62	AV5X64	AV5X68
Frequency	1920...2170 MHz * 1710...2170 MHz **	1920...2170 MHz * 1710...2170 MHz **	1920...2170 MHz * 1710...2170 MHz **	1920...2170 MHz * 1710...2170 MHz **
Bandwidth	250 MHz * 460 MHz **	250 MHz * 460 MHz **	250 MHz * 460 MHz **	250 MHz * 460 MHz **
Impedance	50 Ω DC grounded	50 Ω DC grounded	50 Ω DC grounded	50 Ω DC grounded
VSWR	1,5 max	1,5 max	1,5 max	1,5 max
Polarisation	Slanted ±45°	Slanted ±45°	Slanted ±45°	Slanted ±45°
Gain	9 dBi	12 dBi	15 dBi	18 dBi
E-plane 3 dB beamwidth	60°	30°	15°	7°
H-plane 3 dB beamwidth	60°	60°	60°	60°
Electrical downtilt	None	None	None	None
Front to back ratio	25 dB	25 dB	25 dB	25 dB
Max. Continuous power	0,5 kW	0,5 kW	0,5 kW	0,5 kW
RF-connector	2x7/16 female	2x7/16 female	2x7/16 female	2x7/16 female
Operational windspeed	40 m/s (default)	40 m/s (default)	40 m/s (default)	40 m/s (default)
Survival windspeed	55 m/s (default)	55 m/s (default)	55 m/s (default)	55 m/s (default)
Wind area	0,07 m <sup>2</sup>	0,1 m <sup>2</sup>	0,17 m <sup>2</sup>	0,24 m <sup>2</sup>
Dimensions (HxWxD)	350x250x100 mm	450x250x100 mm	750x250x100 mm	1500x250x100 mm
Weight	2 kg	4 kg	8 kg	13 kg
Mounting diameter	Ø 30...115 mm pipe	Ø 30...115 mm pipe	Ø 30...115 mm pipe	Ø 30...115 mm pipe
Materials	Aluminium Glassfiber radome Glass reinforced PE	Aluminium Glassfiber radome Glass reinforced PE	Aluminium Glassfiber radome Glass reinforced PE	Aluminium Glassfiber radome Glass reinforced PE
Options	Downtilt	Downtilt	Downtilt	Downtilt

\* 1920...1980 MHz and 2110...2170 MHz

\*\* 1920...1980 MHz, 2110...2170 MHz and 1710...1880 MHz

## AV5X9 UMTS BASESTATION ANTENNA SERIES

### - Preliminary datasheet -



Type	AV5X90	AV5X92	AV5X94	AV5X98
Frequency	1920...2170 MHz * 1710...2170 MHz **	1920...2170 MHz * 1710...2170 MHz **	1920...2170 MHz * 1710...2170 MHz **	1920...2170 MHz * 1710...2170 MHz **
Bandwidth	250 MHz * 460 MHz **	250 MHz * 460 MHz **	250 MHz * 460 MHz **	250 MHz * 460 MHz **
Impedance	50 Ω DC grounded	50 Ω DC grounded	50 Ω DC grounded	50 Ω DC grounded
VSWR	1,5 max	1,5 max	1,5 max	1,5 max
Polarisation	Slanted ±45°	Slanted ±45°	Slanted ±45°	Slanted ±45°
Gain	7 dBi	9 dBi	13 dBi	15 dBi
E-plane 3 dB beamwidth	60°	30°	15°	7°
H-plane 3 dB beamwidth	90°	90°	90°	90°
Electrical downtilt	None	None	None	None
Front to back ratio	25 dB	25 dB	25 dB	25 dB
Max. Continuous power	0,5 kW	0,5 kW	0,5 kW	0,5 kW
RF-connector	2x7/16 female	2x7/16 female	2x7/16 female	2x7/16 female
Operational windspeed	40 m/s (default)	40 m/s (default)	40 m/s (default)	40 m/s (default)
Survival windspeed	55 m/s (default)	55 m/s (default)	55 m/s (default)	55 m/s (default)
Wind area	0,07 m <sup>2</sup>	0,1 m <sup>2</sup>	0,17 m <sup>2</sup>	0,24 m <sup>2</sup>
Dimensions (HxWxD)	350x200x100 mm	450x200x100 mm	750x200x100 mm	1500x200x100 mm
Weight	2 kg	4 kg	8 kg	13 kg
Mounting diameter	Ø 30...115 mm pipe	Ø 30...115 mm pipe	Ø 30...115 mm pipe	Ø 30...115 mm pipe
Materials	Aluminium Glassfiber radome Glass reinforced PE	Aluminium Glassfiber radome Glass reinforced PE	Aluminium Glassfiber radome Glass reinforced PE	Aluminium Glassfiber radome Glass reinforced PE
Options	Downtilt	Downtilt	Downtilt	Downtilt

\* 1920...1980 MHz and 2110...2170 MHz

\*\* 1920...1980 MHz, 2110...2170 MHz and 1710...1880 MHz