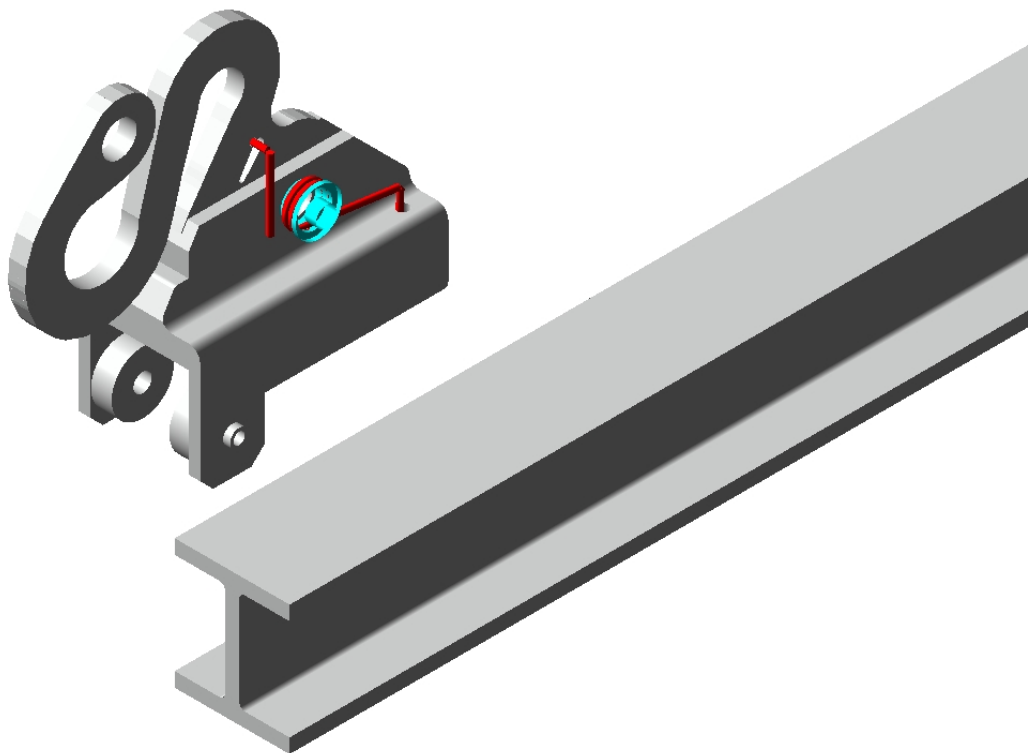


SAFETY RAIL SYSTEM "TARMO"

"TARMO" is an EN approved safety rail system which is especially designed for aluminium masts. The car element is light in weight and compact.

In addition to the Tarmo car itself the system includes aluminium I-profile safety rail, mounting clamps for various mounting environments, extension parts, rail end car stoppers... everything you need.



Type	Safety rail system "TARMO"
Safety rail dimensions	45 x 40 x 5 mm
Safety rail material	Aluminium
Car element weight	1,2 kg
Car element material	Hot dip galvanized steel
EN approved EN 353-1 1996/0403	